



# BREVARD Community Resource



## facebook GROUP

**NEW Community Outreach  
Facebook Group Page!**

Here you will have access to even more community resource and more date sensitive opportunities DAILY! You will also have access to our Newsletter and Master Resource Guide archive. Click [HERE](#) or follow link below to join.

<https://www.facebook.com/groups/EckerdConnectsBrevardCommunityResources/>

## NEWSLETTER

**If you have information you would like us to share in our Newsletter, or if you would like to subscribe, please contact:**

**Jennifer Reaves**  
*Community Resource  
Manager*  
[JReaves@eckerd.org](mailto:JReaves@eckerd.org)

**Elizabeth Fears**  
*Community Outreach  
Specialist*  
[EFears@eckerd.org](mailto:EFears@eckerd.org)

## Feature Of The Week

**Ready for Life Brevard ("RFLB") is a solution-based skill center supporting youth ages 15-25 in homelessness and crime prevention.**



# Ready for Life Brevard

**Changing Lives Beyond Foster Care**

RFLB offers unaccompanied youth and youth aging out of foster care a unique Educational Learning Lab program where they receive a volunteer mentor, access to monthly activities and events, and access to a support group led by former foster youth.

### **OTHER SERVICES INCLUDE:**

- Assistance with accessing critical services such as connections to affordable housing
- The GED FastTrack program, which includes volunteer tutors to help them obtain their GED, high school diploma or pass their college classes.
- A mental health counselor, an attorney for legal services, and access to a food pantry and a clothing closet.
- Get Ready for Employment classes, Financial Literacy classes, Life Skills classes, Get Ready to Rent a Home classes.

**We understand that until immediate basic needs are met, it is nearly impossible to contemplate the future...and RFLB believes that all young people deserve the opportunity for a successful future.**

**For More Information Contact:**  
Pamela Bress, Esquire  
321-204-4478  
[Pam.bress@readyforlife.org](mailto:Pam.bress@readyforlife.org)

**You can also visit their website at:**  
[www.readyforlifebrevard.org](http://www.readyforlifebrevard.org)





### Boosting your child's self confidence!

- Encourage them to complete tasks/solve problems on their own
- Establish routines
- Give them responsibilities
- Celebrate their accomplishments
- Encourage pretend play



## SUPER NEWS!

School start has been delayed and we want you to know we are here for you! We will continue distributing curbside meals for children 18 and under through August 21st Mon-Wed-Fri from 10:30-12:30

- ♦ **Atlantis** - 7300 Briggs Ave., Port St John, FL 32927
- ♦ **Cape View** - 8440 Rosalind Ave, Cape Canaveral, FL 32920
- ♦ **Coquina** - 850 Knox McRae Dr. #1, Titusville, FL 32780
- ♦ **Discovery** - 1275 Glendale Ave. NW, Palm Bay, FL 32907
- ♦ **Golfview** - 1530 S Fiske Blvd., Rockledge, FL 32955
- ♦ **Harbor City** - 1377 Sarno Rd., Melbourne, FL 32935
- ♦ **Mila** - 288 W Merritt Ave., Merritt Island, FL 32953
- ♦ **Mims** - 2582 US-1, Mims, FL 32754
- ♦ **Oak Park** - 3395 Dairy Rd., Titusville, FL 32796
- ♦ **Palm Bay Elementary** - 1200 Allamanda Rd. NE, Palm Bay, FL 32905
- ♦ **Saturn** - 880 N Range Rd., Cocoa, FL 32926
- ♦ **Sherwood** - 2541 Post Rd., Melbourne, FL 32935
- ♦ **Turner** - 3175 Jupiter Blvd. SE, Palm Bay, FL 32909

## Have you been financially affected by COVID-19?

Funds are now available to assist in the purchase of food at the **Brevard County Farmers Market.**

Thursdays 3 - 6 pm

Wickham Park Pavilion

2500 Parkway Dr., Melbourne, FL 32935

Contact [adrienneadams@ufl.edu](mailto:adrienneadams@ufl.edu) for more information.

### AREA MEDIAN INCOME (AMI) LIMITS

**Step 1:** Circle the number of persons in your household. **Step 2:** Circle the income range to the right of the circled household size that describes your household's annual gross income.

	Percentage Category				
	30%	50%	80%	120%	140%
	Equal to or Below:				
1	\$14,550	\$24,250	\$38,750	\$58,200	\$67,900
2	\$17,240	\$27,700	\$44,300	\$66,480	\$77,560
3	\$21,720	\$31,150	\$49,850	\$74,760	\$87,220
4	\$26,200	\$34,600	\$55,350	\$83,040	\$96,880
5	\$30,680	\$37,400	\$59,800	\$89,760	\$104,720
6	\$35,160	\$40,150	\$64,250	\$96,360	\$112,420
7	\$39,640	\$42,950	\$68,650	\$103,080	\$120,260
8	\$44,120	\$45,700	\$73,100	\$109,680	\$127,960

\* NOTE: Your household's annual gross income is the total of ALL income received by ALL persons living in your home including employment, social security, SSI, SSD, unemployment WAGES, child support, alimony, retirement, investment income, etc.

## Updated Food Distribution Sites

Eastwind Pentecostal  
1021 Emerson Drive N.E.  
Palm bay (while supplies last)  
Mondays starting at 2 pm

Centerpointe Food Pantry  
871 Coply Street SE  
Palm bay 32909  
Mon 9am-12pm

Hands For Healing  
1021 Emerson Dr. NE  
Palm bay 32907  
Mon 3pm or call ahead

First United Methodist  
Church of Melbourne  
110 e. New Haven Ave.  
Melbourne, 32901  
Monday at 2 pm

South Brevard Sharing  
Center  
17 E Hibiscus, Melbourne  
32907  
Tues 1 - 5 and Thurs 9 - 1

Melbourne Church of  
Christ  
810 Hollywood Blvd  
West Melbourne 32904  
Tues 8:30am-1pm

Eau Gallie First Baptist  
Church  
1501 W. Eau Gallie Blvd.  
Melbourne 32935  
Tues & Thurs 10-12

Faith Fellowship Church  
2820 Business Center Blvd.  
Melbourne 32940  
Tues 5pm-6:30pm

Melbourne SDA Church  
210 w. New Haven Ave.  
Melbourne 32901  
2nd Tues 4pm-5:30pm

River Run Christian Church  
(get in line early!)  
1660 Croton Road  
Melbourne 32935  
Tues and Thurs 11:30 am  
(while supplies last)

Islamic Society of Brevard  
County  
500 E. Florida Ave.  
Melbourne, 32901  
Wednesday 2 pm

Shiloh Christian Center  
3900 Sarno Rd.  
Melbourne, 32934  
Wednesday 1 pm

Helping Hands Alliance  
344 Emerson Dr. NW  
Palm bay 32907  
Thurs 9-12:30

First Baptist Church of  
Malabar  
1665 Malabar Road  
Malabar  
1st & 3rd Thurs 10-12

Advent Lutheran Church  
Food Bank  
7550 N. Wickham Road  
Melbourne 32940  
Thurs 5:30-6:30

The St Pauls UMC  
1591 Highland Ave.  
Melbourne 32935  
Thurs 3pm-4pm

Mosaic Palm Bay  
2100 Port Malabar NE  
Palm bay, 32907  
Thursday 2 pm

Mount Moriah Missionary  
Baptist Church  
2295 dr. Harvey Riley St.  
NE  
Thurs noon (until food is gone)

Ascension Catholic Church  
Social  
1238 Aurora Road  
Melbourne 32935  
Mon-fri 9am-11am

Project Response, Inc.  
745 South Apollo Blvd.  
Melbourne 32901  
Mon-fri 8:30am-5pm  
Call 321.724.1177 first

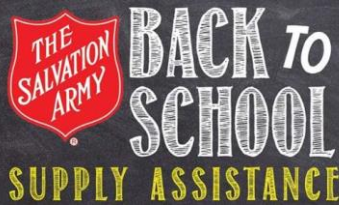




### AUGUST 1st • 8am

Brevard Public Schools and CenterPointe Church Back 2 School are once again having their annual backpack giveaway. If you need assistance with school supplies for your children.

**Location: 891 Coply St. S.E, Palm Bay 32909**



### AUGUST 1st • 9am-12pm

We will be having another drive through food distribution. We are also adding school supplies and backpacks for those with children going back to school. Food and School Supply Distribution. Open to the public. **1084 Hickory Street, Melbourne 32901**



## Reopening Schools Drive-Through Giveaway

For more Information: 321-617-7727  
Info.SupplyZone@BrevardSchools.org

### AUGUST 8th • 9am-12pm

- Student **MUST** be enrolled in Brevard Public Schools.
- Student **MUST** be present in the car to receive supplies.
- Student **MUST** have been enrolled in the Free or Reduced Lunch Program.

**1225 Clearlake Road, Cocoa**



### AUGUST 8th • 1pm - Until Supplies Last

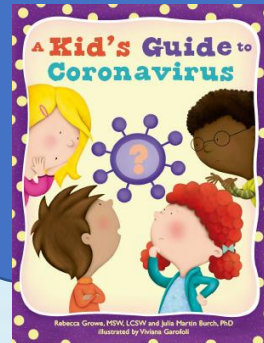
Free school supplies and Free ice cream!

**Registration is required**, please go to [fohback2schoolgiveaway.eventbrite.com](https://fohback2schoolgiveaway.eventbrite.com) to register. Supplies are limited so don't delay

**705 Blake Ave, Cocoa**

## Parent Resources Links

- For resources on kids anxious about going back to school after COVID click: [HERE](#)
- Information on Florida VPK Education Program click: [HERE](#)



To View Book  
Click [HERE](#)



**IS YOUR CHILD  
HAVING TROUBLE READING?**  
**Help is Here!**



## Reading Scholarship Accounts

In 2018, Florida became the first state to offer an education savings account program for students enrolled in public schools. The Reading Scholarship, administered by Step Up For Students, was created to help public school students in third through fifth grade who struggle with reading. The program offers parents access to education savings accounts, worth \$500 each, to pay for tuition and fees related to part-time tutoring, summer and after-school literacy programs, instructional materials and curriculum related to reading or literacy.

### Who Is Eligible?

- Third- through fifth-grade public school students who scored a 1 or 2 on the third or fourth grade English Language Arts section of the Florida Standards Assessment in the prior year.
- Students who are classified as English Language Learners, and who are enrolled in a program or receiving services that are specifically designed to meet the instructional needs of English Language Learner students, will receive priority.

### What Is It?

- The scholarships are worth \$500 each and can be used for reimbursement for the following:
  - » Tuition and fees for part-time tutoring provided by a person who holds a valid Florida educator's certificate, a baccalaureate or graduate degree in the subject area (Reading, Elementary Education, or English Education), an adjunct teaching certificate, or has demonstrated mastery of the subject area knowledge.
  - » Fees for summer education programs designed to improve reading or literacy skills.
  - » Fees for after-school education programs designed to improve reading or literacy skills.
  - » Instructional materials and curriculum related to reading or literacy.
- Program funds are limited and are available on a first-come, first-served basis.

### How Do I Apply?

Visit [StepUpForStudents.org](https://StepUpForStudents.org) for the latest information.

### Reading Scholarship Questions?

reading@sufs.org Scholarship Hotline 877-735-7837

f StepUp4Students

➔ [sufs.org](https://sufs.org)

@StepUp4Students

As of September 2018 for the 2018-19 school year.

RPS  
**NEWS**  
RELEASE

## School Board Votes to Delay Start of 2020-21 School Year for Brevard Public Schools to August 24

Adjustments to the school calendar are as follows:

- Teachers' first day is now August 10, 2020
- First day of school is now August 24, 2020 for students in grades 1-12
- First day of Kindergarten is August 27
- First day of Prekindergarten is August 31
- Students' last day of school is now June 3, 2021
- Moves non-student workdays 10/12/20, 2/15/21, 3/22/21 and 5/28/21 to beginning of teacher calendar
- Second semester will now end after Memorial Day on June 3, 2021

### Brevard Public School Links

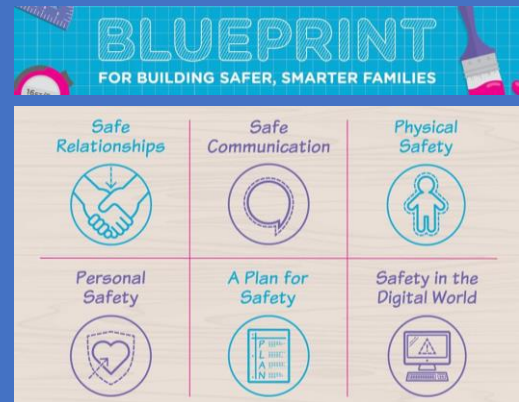
**2020-2021 School Reopening Outline and Guideline Plans:** [Click Here](#)  
or follow link: <https://tinyurl.com/y2rt2hx3>

### 2020-2021 At A Glance Calendar

### For Details On These 4 Learning Options

### ATTENTION BPS FAMILIES...

If you have already applied to Brevard Virtual School's Full-Time Program and would prefer to participate in eLearning from your school, please email [BrevardVirtual@brevardschools.org](mailto:BrevardVirtual@brevardschools.org) **AS SOON AS POSSIBLE** to rescind your application, so that we can ensure an appropriate number of teachers at your school.



Order or download your 'Blueprint for Building Safer, Smarter Families' activity pack today! This interactive activity pack is designed help families teach kids the basics of personal safety and the strategies needed to prevent abuse – all from a place of fun, not fear! Adults receive their own “parent pack” to use with their child, while kids follow along in their own workbook complete with crossword puzzles, word searches, crafts, roleplay scenarios, games and other entertaining activities.

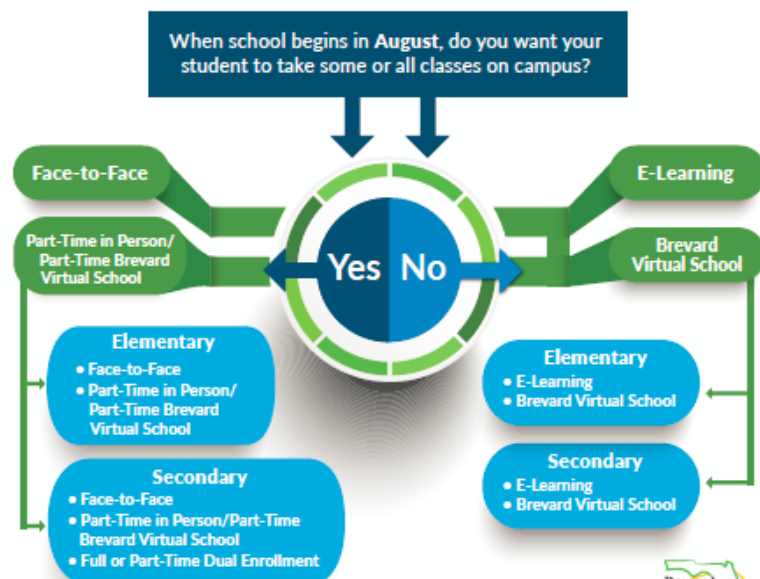
Order a printed copy today at [shop.laurenkids.org](http://shop.laurenkids.org) (FREE for Florida families!), or download your digital, printable copies at <https://laurenkids.org/familysafety/>.

**FOR PROVIDERS:** Follow link above, scroll to downloadable version, input state and affiliation, click on Healing & Prevention Resources, then place orders for FREE

### LEARNING OPTIONS DECISION TREE

All options displayed in green.

NOTE: Families of Students with Disabilities and English Language Learners who choose an option other than Face-to-Face may be contacted by school-based personnel to review the individual student's needs.





## Mental Health Resource Links

- Race, Racism and Mental Health resources [HERE](#)
- Mental Health Resources For Minorities: [HERE](#)
- Resources To Support Adolescent Mental Health: [HERE](#)
- Calming Anxiety In Children: [HERE](#)
- Helping Children Cope During COVID Outbreak: [HERE](#)
- How to Help Children with Autism Manage Schedule Changes Due To Covid-19: [HERE](#)
- Coping With Anxiety When Wearing A Mask: [HERE](#)
- What Educators and Parents need to know about childhood Trauma: [HERE](#)



### Outpatient Behavioral Health Services

Can offer low cost or free mental health or substance misuse support.  
[www.impowerfl.org](http://www.impowerfl.org)

- To Make a Referral or Schedule an Appointment for Outpatient Mental Health or Psychiatric Services:  
**Call: 321.639.1224 Option 2**  
**Email: [referrals@impowerfl.org](mailto:referrals@impowerfl.org)**



**Next Generation Village**

**Call For More Information:**

**407-414-0037**

**OR**

**855-804-9194**

## Adolescent beds available for detox and residential treatment!

Next Generation Village and Advanced Recovery Systems is an inpatient behavioral healthcare company that treats adolescents and adults struggling with addiction, substance abuse and mental health in centers across the country.

We have beds available and we are also offering Telehealth Intensive Outpatient Programs for primary Substance Abuse and primary Mental Health.

**Follow link for a virtual tour of Next Generation Village, which is our adolescent facility:** <https://youtu.be/zc9dfb2qfVM>

[Click To View: Adolescents Telehealth Service Brochure](#)

## Relapse Prevention During A Pandemic

**Follow Link To Access Full Resource:**

<https://www.therecoveryvillage.com/treatment-program/aftercare/related/relapse-prevention-plan/>

### ***What Is a Relapse Prevention Plan?***



*A relapse prevention plan helps you recognize your own personal behaviors that may point to a relapse in the future*

### ***What to Consider When Creating a Relapse Prevention Plan***

1. Assess your history
2. Determine any signs that could lead to relapse and have an action plan for each one
3. Have a step-by-step plan of what will happen if you do relapse or come close

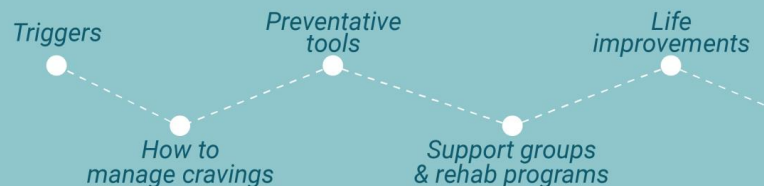


### ***What to Include in Your Relapse Prevention Plan***

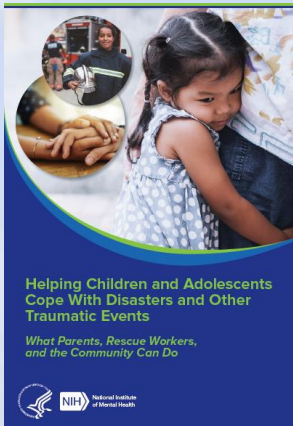


- ✓ Triggers
- ✓ Cravings
- ✓ Healthy tools
- ✓ Recovery program tools
- ✓ Damage control

### ***Relapse Prevention Plan Template***



## Helping Children & Adolescents Cope With Disasters and Other Traumatic Events



Each year, children and adolescents experience disasters and other traumatic events. Parents, rescue workers, and members of the larger community can help children start the process of recovery and overcome these experiences.

To View Full Publication and Downloadable Copy Click [HERE](#)



## The Recovery Village Educational Series:

The Recovery Village® offers online and in-person educational opportunities to help medical professionals stay up to date with the latest advancements in their fields and earn continuing education credits. We also offer community education for anyone interested in addiction and mental health topics.

To View Upcoming Series or View Past Series Visit:

<https://www.therecoveryvillage.com/professionals/continuing-education/>

Guidance is available [HERE](#) or Follow Link Below:

<https://www.cdc.gov/coronavirus/2019-ncov/need-extra-precautions/pregnancy-breastfeeding.html>

Pregnant women may be at increased risk for severe illness from COVID-19 compared with non-pregnant women



Pregnant women and their families should take steps to stay healthy and reduce their risk for getting COVID-19

CDC.GOV

bit.ly/MMWR62520

MMWR

## Updated COVID-19 Testing Sites

### State-Supported Drive-Through Site:

- **Eastern Florida State College Palm Bay Campus**, 250 Community College Parkway, Palm Bay 32909 (enter at San Filippo Drive SE at Manchester Circle)
- No appointment required
- 9am-5pm, seven days a week
- Must be 18 with photo ID

### Department of Health in Brevard:

- **Viera Clinic**, 2555 Judge Fran Jamieson Way, Viera, FL 32940
- Appointment required by calling 321-454-7141
- 8:30am-noon and 1:30-3:30pm Monday, Tuesday, Wednesday, Friday
- **Mobile site**, 9am-2pm Thursday, July 16, Parker Memorial Baptist Church, 4101 Melvin Chatman Way, Cocoa (West)

### Health First:

- **Pro-Health & Fitness**, 255 Borman Drive, Merritt Island, FL 32953
- Appointment preferred but not required by calling 321-434-3131
- 9am-noon Monday-Saturday

### Parrish Healthcare:

- Appointments required by calling 321-268-6139 or texting "covid test" to 321-204-1699
- Tuesday-Thursday afternoons, Friday-Saturday mornings
- Rotating sites in Titusville, Port St. John and Mims

## Latest Guidance

- [Evaluation and Management Considerations for Neonates At Risk for COVID-19](#)
- [Considerations for Inpatient Obstetric Healthcare Settings](#)
- [Care for Breastfeeding Women](#)



## Housing / Utilities & COVID-19 Emergency Assistance Updates

### **Section 8 Waitlist 2020 - 2021**

HABC will be accepting applications for the HCV Program (Section 8) starting at 12:01AM to 11:59PM on the following dates:

**April 1, 2020 - April 5, 2020**  
**July 1, 2020 - July 5, 2020**  
**October 1, 2020 - October 5, 2020**  
**January 1, 2021 - January 5, 2021**

<https://habc.us/>

Applications will be available online at <https://habc.us/>.

To request a reasonable accommodation, please contact [cwoods@habc.us](mailto:cwoods@habc.us)



### TROUBLE PAYING RENT?

If your household has experienced a loss of income due to COVID-19 and need rental assistance, please visit the [Brevard County relief program \(click here\)](#).

**TITUSVILLE RESIDENTS:** emergency assistance is available to households who have been impacted by the COVID-19 Emergency Disaster for rent and utilities. [Click here to learn more.](#)

**MELBOURNE RESIDENTS:** if you need rent or utility assistance, please call (321) 608-7530 after July 22nd.

**DID YOU KNOW** there's a suspension on evictions due to COVID-19? [Click here to read HUD's response addressing tenant concerns regarding rent and the temporary suspension of evictions for nonpayment of rent.](#)

### IN RESPONSE TO THE CURRENT SITUATION,

we've implemented our staff telecommuting plan which takes effect on Monday, March 23, 2020 and will remain in place until further notice.

[Click here to see our official letter.](#)

**[Current Public Housing Residents](#)**

Click here to submit changes or requests

**[Current Section 8 Tenants](#)**

Click here to submit changes or requests

### FPL Utilities Payment Assistance:

Having trouble paying your FPL bill because of COVID-19? You may qualify for local, state and/or federal financial assistance, which has increased significantly due to the pandemic. We will continue working closely with you to do everything we can to avoid turning lights off for nonpayment, which is and has always been a last resort.

**Call us directly at 800-226-3545.**

### The City of Palm Bay Utilities Department:

Has payment plans available for customers who may be experiencing financial stress during these uncertain times. Normal billing operations and shutoffs begin August 1st, so make sure to contact Customer Service at (321) 952-3420 or online at [www.pbud.org](http://www.pbud.org) to discuss options and arrangements that are available to you.

### The City of Melbourne Utilities Department:

We encourage customers who are experiencing difficulty paying their utility bill to notify us as quickly as possible so we can make payment arrangements that will help to avoid a disruption to your service. We can be reached by phone at (321) 608-7100 or by e-mail at [water.sewerbills@mlbfl.org](mailto:water.sewerbills@mlbfl.org). If you communicate via e-mail please include your account number and property location.

### **-EVICTON ORDERS- MORTGAGE AND RENT PAYMENTS:**

- The Governor's Executive Order 20-94 that suspended mortgage foreclosures for residential and commercial property owners has been **Ends on August 1st** However, the order does not relieve or forgive any debts. **City of Melbourne Ends August 3rd.**
- The CARES Act prohibits landlords from bringing an eviction action for nonpayment of rent against tenants in these properties from **March 27, 2020 through July 25, 2020**. During this time landlords may not charge fees or penalties for nonpayment. **After July 25, 2020 landlords of these properties can begin filing evictions again, but they are required to give tenants a 30 days' notice.**
- A copy of the chief judge's administrative order regarding this and the Landlord CARES Act Information Sheet which includes a list of the types of properties covered by the CARES Act can be found here:  
[http://www.brevardclerk.us/\\_cache/files/0/9/090a9193-7707-4a51-8fe0-d10ecdcd10337/4AE04359F01F80F359BBD7E9566AED9B.20-27-002-.pdf](http://www.brevardclerk.us/_cache/files/0/9/090a9193-7707-4a51-8fe0-d10ecdcd10337/4AE04359F01F80F359BBD7E9566AED9B.20-27-002-.pdf)

## Florida Department of Economic Opportunity Reemployment Assistance Update

### UPDATES:

- Starting **Monday, July 7**, the request to modify the date of your claim must be made by calling the Reemployment Assistance Customer Service center at **1-833-FL-APPLY (1-833-352-7759 and choose option 5)**.
- You may be eligible to modify the date of your claim to the date you originally attempted to apply for Reemployment Assistance only if you were unable to file a claim between the weeks of March 9, 2020 to April 9, 2020.
- The waiting week requirement will continue to be waived through **September 5, 2020**.
- Reminder: Federal Pandemic Unemployment Compensation (FPUC), which includes an additional \$600 weekly benefit for individuals who are eligible for state or federal Reemployment Assistance benefits, applies to weeks beginning March 29, 2020 and ending July 25, 2020.

### PANDEMIC UNEMPLOYMENT ASSISTANCE:

The Federal Pandemic Unemployment Assistance (PUA) program provides unemployment benefits to those that may not otherwise be eligible under Florida's state Reemployment Assistance program, including independent contractors and individuals who are self-employed. Individuals who have been impacted by COVID-19 and believe they may be eligible for Pandemic Unemployment Assistance, can visit [www.FloridaJobs.org](http://www.FloridaJobs.org) and select "File a Claim" to apply and be considered for PUA.

### FEDERAL PANDEMIC UNEMPLOYMENT COMPENSATION (FPUC):

Is available for eligible applicants who are currently receiving regular state Reemployment Assistance benefits. FPUC is an additional \$600 distributed weekly in addition to state Reemployment Assistance benefits. Due to the system upgrades in CONNECT, DEO is able to issue the additional \$600 payments in multiple ways. If you are eligible and have previously provided a bank account in the CONNECT system, you will receive a direct deposit to your account. If you did not provide your bank account, you will receive a check to the mailing address provided on your account.

## New Information

### PANDEMIC EMERGENCY UNEMPLOYMENT COMPENSATION (PEUC)

• The Federal Pandemic Emergency Unemployment Compensation (PEUC) program is now available. This program, offered through the federal CARES Act and administered by DEO, provides up to 13 weeks of benefits to a claimant who has exhausted their Reemployment Assistance benefits.

• **Floridians will need to apply for PEUC benefits once the balance of their current claim is exhausted. Floridians who have already exhausted their benefits or have a Reemployment Assistance claim that expired after July 1, 2019, will also be able to apply.**

- Click [here](#) for PEUC Application process.
- Click [here](#) for PEUC Frequently Asked Questions.
- Click [here](#) for COVID-19 Employment Scenarios.



### NEED HELP WITH YOUR FINANCES?



United way offers free virtual financial management counseling. Morgan Bonilla on our team is a Certified Financial Education Instructor. Contact her:

**[mbonilla@uwbrevard.org](mailto:mbonilla@uwbrevard.org)  
321-615-3274.**

## Personal Protection Equipment (PPE) Kits For Small Businesses!



Funded through the federal Coronavirus Air, Relief and Economic Security (CARES Act): Small businesses in Brevard County that employ 25 or fewer workers can apply beginning Monday, July 20th. Applications are available online at: [www.brevardfl.gov/BrevardCARES](http://www.brevardfl.gov/BrevardCARES).

Distribution of the PPE kits will be held from Monday, Aug. 3, through Friday, Aug. 7, at various locations in the county.

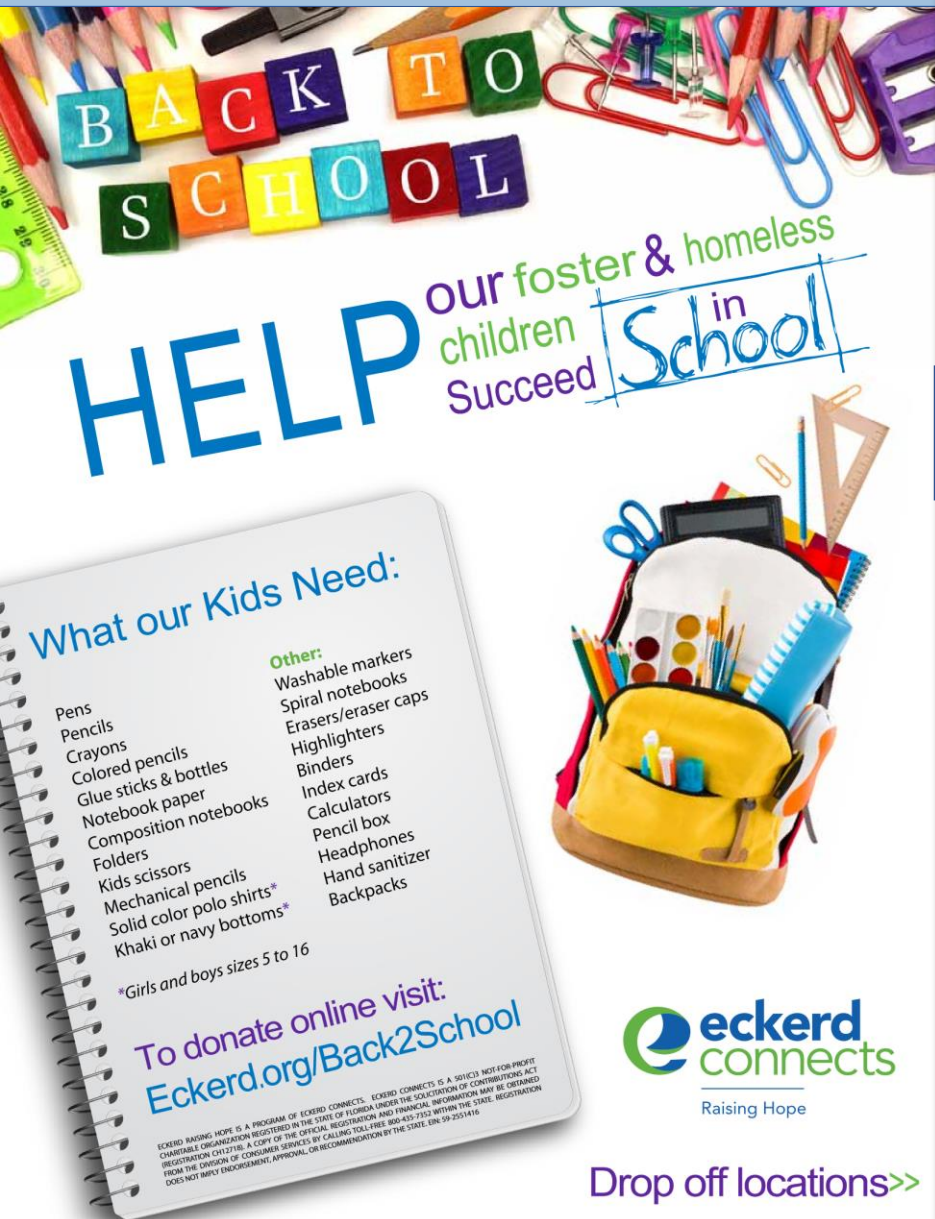
**View the full press release here:**

<http://www.brevardfl.gov/communications/viewrelease?id=4348>

**For more information, call (321) 350-9275**



## Eckerd Connects Highlights



**HELP** our foster & homeless children Succeed in School

**What our Kids Need:**

- Pens
- Pencils
- Crayons
- Colored pencils
- Glue sticks & bottles
- Notebook paper
- Composition notebooks
- Folders
- Kids scissors
- Mechanical pencils
- Solid color polo shirts\*
- Khaki or navy bottoms\*

**Other:**

- Washable markers
- Spiral notebooks
- Erasers/eraser caps
- Highlighters
- Binders
- Index cards
- Calculators
- Pencil box
- Headphones
- Hand sanitizer
- Backpacks

\*Girls and boys sizes 5 to 16

**To donate online visit:**  
[Eckerd.org/Back2School](http://Eckerd.org/Back2School)

ECKERD Raising Hope is a PROGRAM of ECKERD CONNECTS. ECKERD CONNECTS is a 501(c)(3) NOT-FOR-PROFIT CHARITABLE ORGANIZATION REGISTERED IN THE STATE OF FLORIDA UNDER THE SOLICITATION OF CONTRIBUTIONS ACT REGISTRATION CHAPTER 322. A COPY OF THE OFFICIAL REGISTRATION AND FINANCIAL INFORMATION MAY BE OBTAINED FROM THE DIVISION OF CONSUMER SERVICES BY CALLING TOLL FREE 800-435-7752 WITHIN THE STATE REGISTRATION DOES NOT IMPLY ENDORSEMENT, APPROVAL, OR RECOMMENDATION BY THE STATE. LNK-19-2551416

**eckerd connects**  
Raising Hope

Drop off locations>>

### Drop off locations:

#### Brevard

Eckerd Connects  
2226 Sarno Road, #107  
Melbourne, FL

Eckerd Connects  
4095 US Highway 1  
Unit A  
Rockledge, FL 32955

#### Hillsborough

Eckerd Connects | Community Alternatives  
9391 N Florida Avenue  
Tampa, FL

#### Pasco

Eckerd Connects | Community Alternatives  
7916 Evolutions Way, #102  
Trinity, FL

Eckerd Connects | Community Alternatives  
36739 SR 52, #201  
Dade City, FL

#### Pinellas

Eckerd Connects | Community Alternatives  
8550 Ulmerton Road, #130  
Largo, FL

Eckerd Connects  
100 N Starcrest Drive  
Clearwater, FL

### DID YOU KNOW...

**The CARES Act allows taxpayers to deduct charitable donations of up to \$300 on their 2020 federal tax return even if they take the standard deduction?**

*Just a small incentive for those of you able to contribute to the important work nonprofits are doing in our community at this time.*

See what some of our fellow Non-profits are doing for our community.

### Serene Harbor:

Holding an Adult Backpack Drive for victims of domestic violence who are returning to the workforce or going back to school.

- Click [HERE](#) to view Flyer

### Grandparent Raising Grandchildren:

*Proceeds benefit the Child First Program*

GRG is hosting a Face Mask Fundraiser. \$10 Donation for a packet. Each packet includes 2 reusable and 2 disposable face masks. Since many places are requiring masks now for entry, these will be handy to keep in your car if you forget your mask!

If you are interested:

Send email to: [walshsn605@gmail.com](mailto:walshsn605@gmail.com)

### Ready for Life Brevard:

Is seeking donations of \$25.00 gift cards to Walmart or Publix for incentives to give to its at risk youth clients who complete our programs. RFL incentive based programs really motivate youth to attend and complete these programs.

We have the Ready for Life Brevard FastTrack GED 5 week intense small class program along with the career pathway assessment following it. We also have a 4 week Life Skills class.